





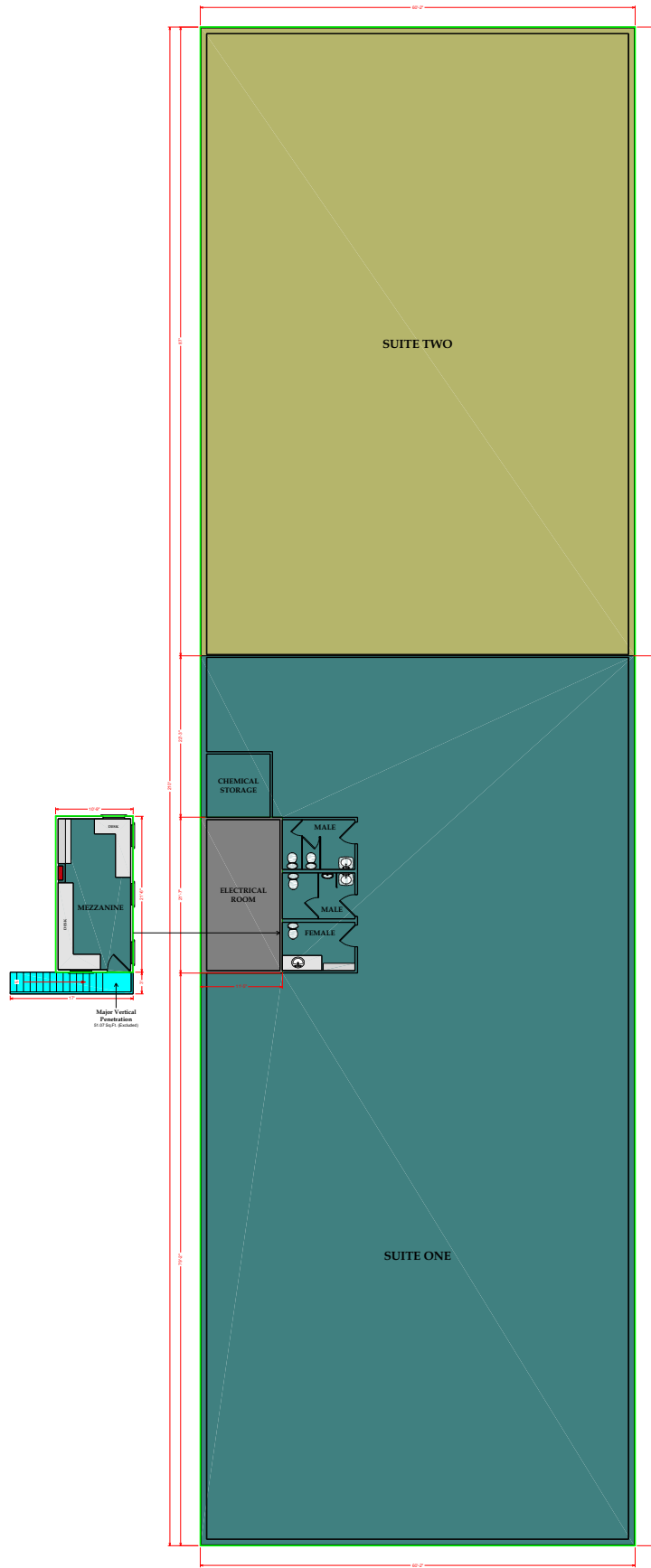
3908 84th Avenue, Leduc AB

Industrial Buildings: Standard Methods of Measurements (ANSI/BOMA 2012 - 2012)

	BUILDING COMMON AREA // 246.00 SQ.FT.
	SUITE ONE - USABLE AREA // 7370.20 SQ.FT. RENTABLE AREA // 7514.20 SQ.FT.
	SUITE TWO - USABLE AREA // 5218.40 SQ.FT. RENTABLE AREA // 5320.30 SQ.FT.
	GROSS BUILDING AREA // 12834.60 SQ.FT.

Prepared by Urban Measure Inc.
4034 16th Street SW // Calgary AB
www.urbanmeasure.com // 403.827.4420

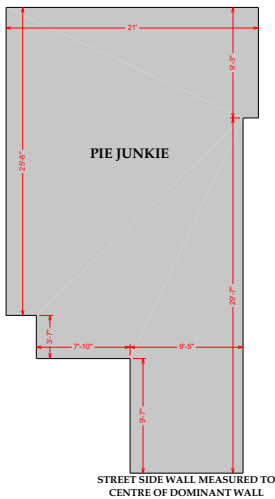
Date completed - April 23rd, 2018
Drafted to Scale - 1/4 Inch = 6 Feet
Building R/U Ratio = 1.0195



1087 2 AVENUE NW

BOMA MEASUREMENT STANDARDS 1996 - Calgary, AB
TUK TUK THAI - BOMA USABLE AREA - 1688.71 Sq.Ft. / 156.88 m²
TD BANK UNIT - BOMA USABLE AREA - 1514.51 Sq.Ft. / 140.70 m²
RED'S DINER UNIT - BOMA USABLE AREA - 3157.62 Sq.Ft. / 293.34 m²
PIE JUNKIE - BOMA USABLE AREA - 670.57 Sq.Ft. / 62.30 m²
AGGREGATE AREA - 7701.98 Sq.Ft. / 715.51 m²

DATE COMPLETED: OCTOBER 30 2017
PROPERTY TYPE: COMMERCIAL



2123 20TH STREET

Retail Buildings: Standard of Measurement (ANSI/BOMA Z65.5-2010) - Nanton, AB

MAIN LEVEL (Usable Area) - 3951.92 Sq.Ft. / 367.13 m²

DATE COMPLETED

OCTOBER 20TH 2017

